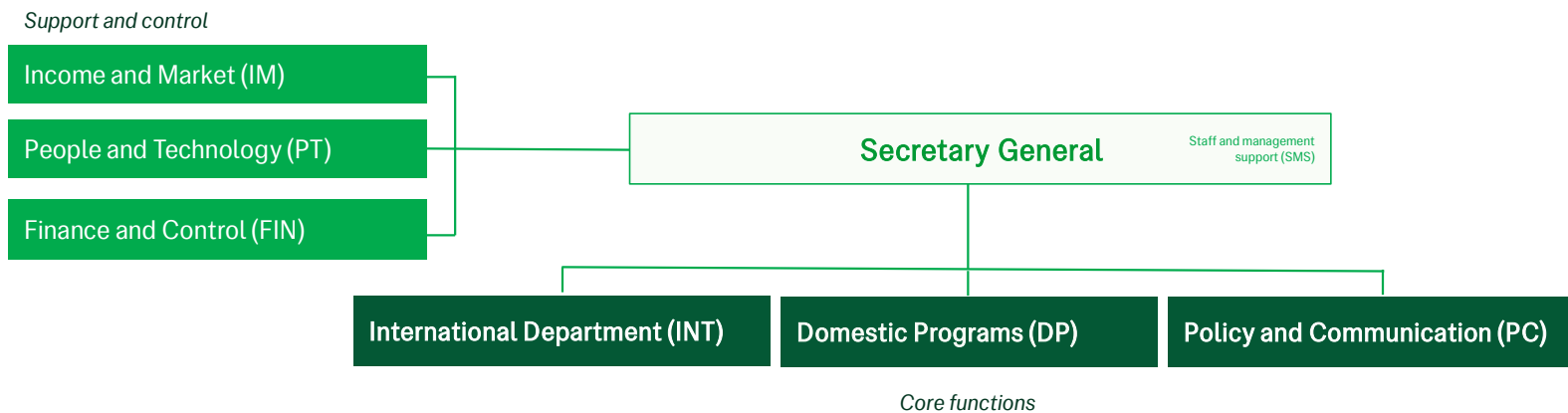
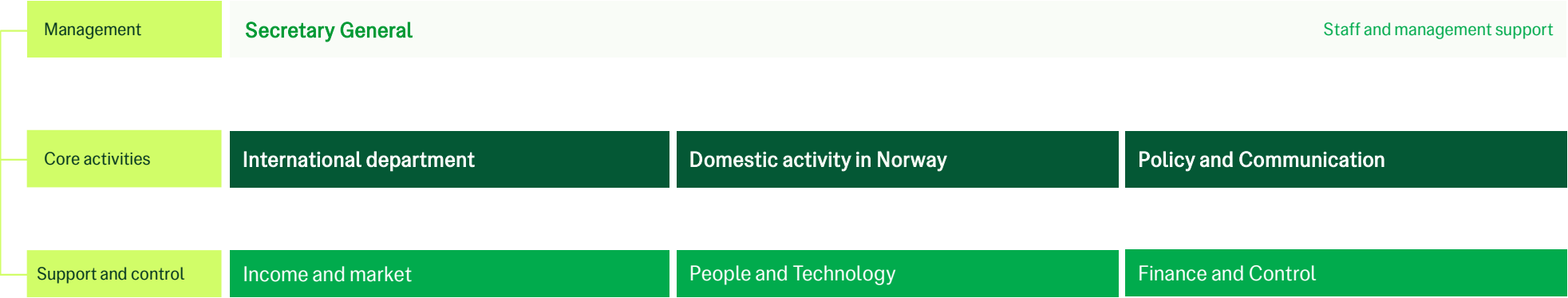


## Norwegian People's Aid: Head Office Department Structure



Norwegian People's Aid:  
Head Office Department Structure



Norwegian People's Aid:  
Head Office Department Structure

|                     |  |   |   |
|---------------------|--|---|---|
| Management          | <b>Secretary General</b> Office of the Secretary General (OSG)   Unit for Governance and Compliance (GOC)   Section for Security and Crisis Management (SEC) |   |   |
| Core functions      | <b>International department (INT)</b>  | <b>Domestic Programs (DP )</b>                                    | <b>Policy and Communications (PC)</b>       |
|                     | Regional sections<br>(Africa and Latin-America - AFLA, Middle East and North Africa - MENA, Asia and Europe – ASE) → Country Offices                         | Section for Local preparedness and volunteer Engagement (LPVE)    | Section for Policy and Advocacy (POL)       |
|                     | Section for Mine Action and Disarmament (MAD)  | Section for Organisational Development and Member relations (ODM) | Section for Communications (COM)            |
|                     | Section for Civil Society Partnership (CIV)  | Unit for National preparedness, first-aid and rescue (PFR)        |   |
| Support and control | Unit for Humanitarian Response (HUM)   | Unit for Inclusive Communities and Anti-racism (ICA)              |   |
|                     | <b>Income and market (IM)</b>  | <b>People and Technology (PT)</b>                                 | <b>Finance and Control (FIN)</b>            |
|                     | Section for Institutional Donors (ID)  | Section for HR og Leadership (HRL)                                | Section for Accounting (ACC)                |
|                     | Section for Private Donors and Corporations (PDC)  | Section for Technological Solutions (TEC)                         | Section for Controlling (CON)               |
|                     | Unit for analysis (ANL)  | Unit for Compensations and Benefits (COB)                         | Unit for Logistics and Procurement (LOG)    |
|                     |  |   | Unit for Treasury and Risk Management (TRI) |